



INFINITE FORWARD PLEASURE

AUFINE TYRE CO., LIMITED

☎ +86-532-88960296, 88962532

✉ info@aufine.com 🌐 www.aufine.com



TRUCK & BUS TYRES 2023



About Us >>

AUFINE TYRE CO., LTD is located in the beautiful coastal city of Qingdao. Relying on accurate market-oriented R&D relief, strict quality control, sound marketing and a perfect service system, AUFINE is committed to providing the best tyre, best service and most valuable brand to the world.

The major products of AUFINE include truck and bus radial tyres, and passenger car tyres, which have passed DOT, ECE, REACH, ISO9001, S-MARK, CCC, GCC, BIS, SMARTWAY, INMETRO, SASO, SONCAP, LATU, NOM certifications. AUFINE tyre distribution network is over 150 countries across Europe, the Americas, Asia, Africa and Oceania.

Adhering to the mission of bringing safety, comfort and pleasure to drivers all over the world, AUFINE commits to the innovation and upgrading of products as the heart of the enterprise. AUFINE people are absorbed in meeting local individual demands. AUFINE tyre takes innovation as the growing power of the brand. Moreover, AUFINE has a standard process of the development system and independent research and production ability to develop high-performance tyres with a wide base, low section and low noise. Dedicating all the best services to clients is the invariable attitude of AUFINE.

AUFINE professional sales specialists provide you with a full range of services on recommendations, orders, shipping and after-sale services. Regional management of market channels, highly matched with products and channels and inspiring incentive strategy ensure clients' salesmen growth. AUFINE provides diversified promotional items to clients, especially with customized support to local markets. Integral and regional marketing strategy leads AUFINE to faster growth.

Between the road and the vehicle, drivers only can trust the tyres, AUFINE tyre is for a safety escort. Between the clients and the brand, markets only believe in high-quality products and services, and AUFINE tyre gives clients long-term trust.

AUFINE TYRE, INFINITE FORWARD PLEASURE!

General content >>

Company introduction	1
Technology guide	3
Tyre application chart	7
Long haul	9
Regional	18
Mix	29
Off road	36
Size line-up	40
Recommendations	43
European Tyre Labelling	44



Cost Performance



Satisfaction

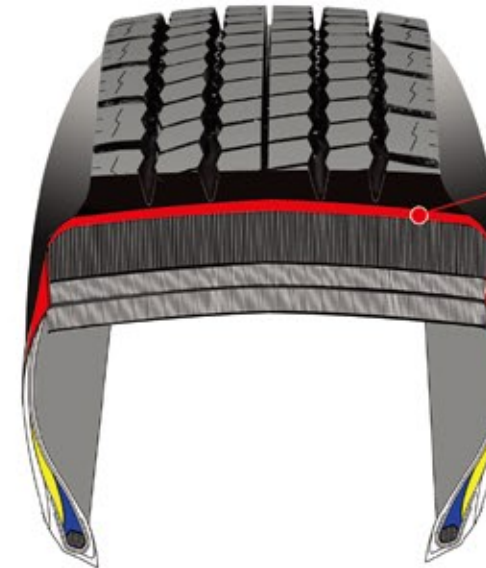


Reliability

FEATURES				Application
<p>TPI-NR Technology can maintain and improve the original features of rubber especially the dynamic features such as rolling resistance, low heating, anti-fatigue and anti-abrasion.</p>	*	*	*	
<p>Dual Apex (combination of hard and soft apex) retains the rigidity and stability of bead and improves fuel efficient and comfort.</p>	*	*	*	
<p>SWP (Sidewall Protection) protects sidewall and tyre body from crash and impact.</p>	*		*	
<p>Low Heating Technology with improving formula of tread rubber helps on fuel-saving and green performance.</p>	*		*	
<p>Self Cleaning Design efficiently helps less stone retention, avoiding damages to the groove bottom.</p>	*	*	*	
<p>Ex-Width Solid Shoulder enhances grip on road surface, comfortable handling performance and safety. Progressive, variable-width grooves reduce noise. The closed shoulder design improves anti-wear ability of tread and restrains eccentric wear of shoulder.</p>	*	*		
<p>Ex-Width Open Shoulder enhances grip on road surface, comfortable handling performance and safety. Progressive and variable-width grooves reduce noise. The open shoulder design improves strong traction and braking ability.</p>	*	*		



TPI-NR Technology



The shoulder wedge in high-stress area should possess excellent fatigue durability and good adhesivity. TRI-NR (Trans-1,4-polyisoprene blend with Natural Rubber) Technology well keeps the tensile strength and tearing strength of tyre compound, while it lowers heating and rolling resistance. This technology can increase adhesivity and decrease hardness at the same time.

High dynamic fatigue resistance and good thermal aging resistance help increase mileage.

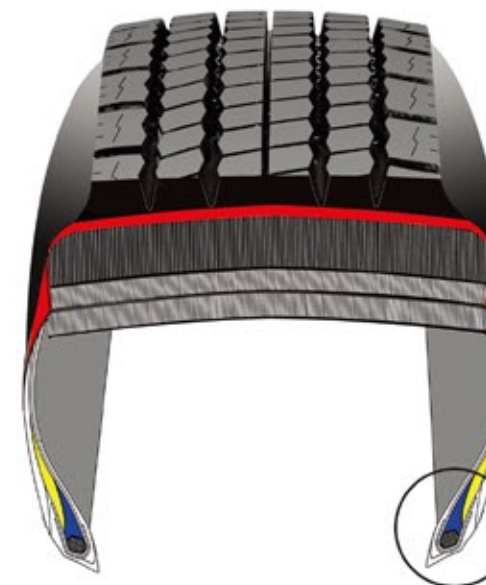
Low noise and Low rolling resistance

Lower the costs by higher mileage

Satisfaction



Dual Apex The combination of two different bead fillers: Hard Apex and Soft Apex



Soft Apex can keep good elasticity of tyre bead, operator comfort and anti-bending performance.

Satisfaction

Hard Apex can keep tyre bead with good stiffness, operation stability and reducing deformation.

Reliability

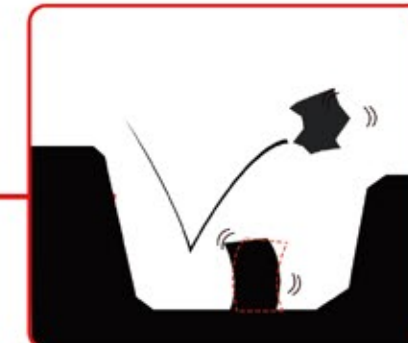
SWP Sidewall Protection



Unique sidewall design protects sidewall and tyre body from crash and impact. It also ensures stability of tyre construction and increases lifespan.

Lower the costs by higher mileage

Self Cleaning Design

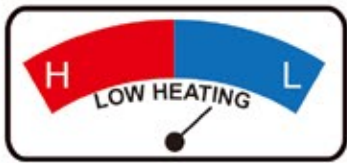


Protective ridges in the base of the tread grooves improve self cleaning properties and protect grooves from puncturing and cutting, which ensures long lifespan and higher mileage.



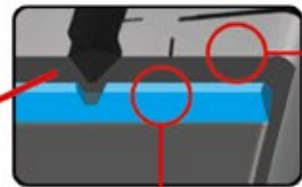
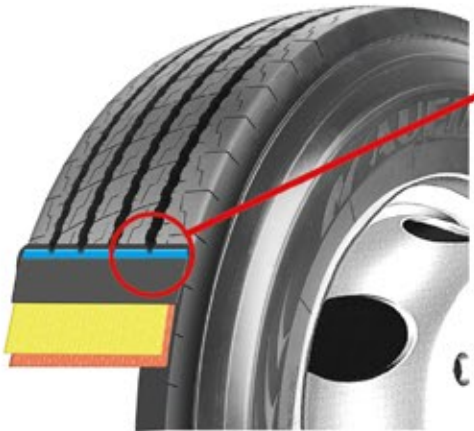
Belt ply

- Lower the costs by higher mileage
- Reliability
- Satisfaction



Low Heating Technology

The top layer provides wear resistant quality and the base rubber between the topsheet and the cord fabric includes a special component that lowers down the tyre temperature.



Crown compound is with high elasticity, good anti-wear performance, low heating and high anti-tear performance.

The base rubber on the crown offers low-heating and good anti-chip performance.

The tread rubber is the key factor of the tyre service life. High Anti-wear and low heating performance helps to improve longer mileage.

Lower the costs by higher mileage

Reliability

The widened contact area provides stronger traction and ensures much safer and more comfortable handling. The closed shoulder design improves anti-wear ability of tread and restrains eccentric wear of shoulder. And it helps steady handling, lower noise, lower heating, which provides much more comfort during driving.

Satisfaction

The widened contact area provides stronger traction and ensures the driving safer and more comfortable. The open shoulder with transverse block pattern design provides excellent traction and braking ability.

Satisfaction

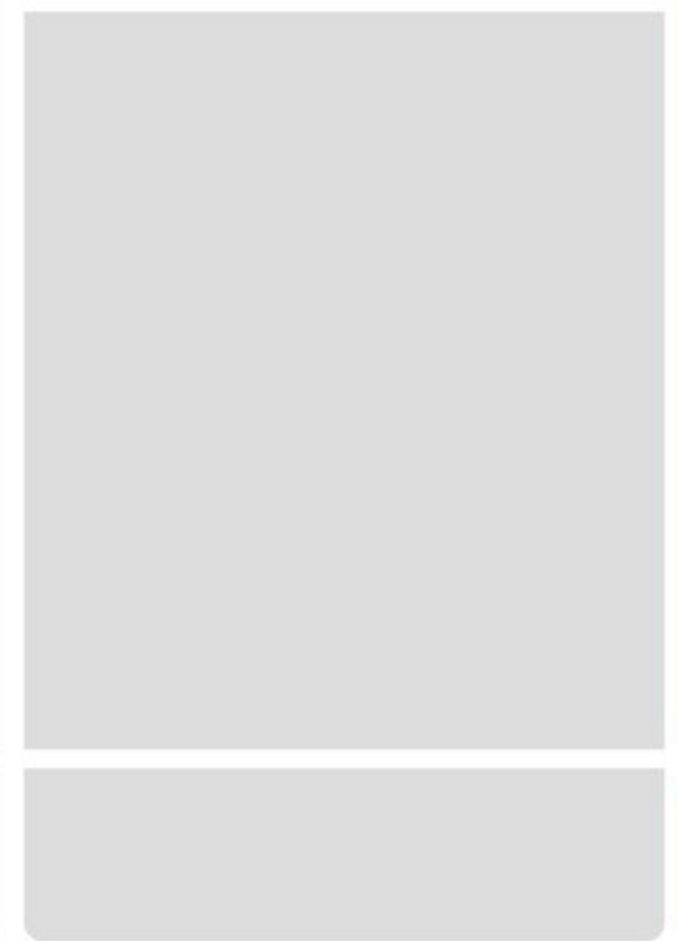


All Position / Steer



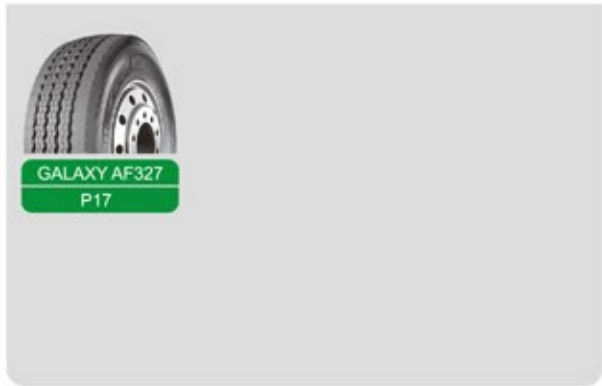
All Position / Steer

Drive



Drive

Trailer



Trailer



LONG HAUL

Application
 Long distance / High speed



ENERGY AEL2



- Recommend to use
- Permitted
- Not recommended to use

Excellent mileage combined with low rolling resistance and optimum wet braking characteristics.

Improved wet braking and mileage performances and excellent wet grip.

Robust, damage resistant carcass construction for enhanced durability.

Size	P.R.	Load Range	Style	Load Index	Tread Depth		Max Speed mph	Speed Rating	Overall Diameter		Overall Width		Standard Rim	Max. Tire Load Single				Max. Tire Load Dual			
					32nds	mm			in.	mm.	in.	mm.		lbs.	psi	kg.	kPa	lbs.	psi	kg.	kPa
295/80R22.5	18	J	TL	154/151	20.8	16.5	75	L	41.1	1044	11.7	298	9.00	8270	130	3750	900	7610	130	3450	900
				152/148																	
315/70R22.5	18	J	TL	156/150	18.9	15	75	L	40.0	1017	12.2	310	9.00	8820	130	4000	900	7390	130	3350	900
				154/150																	
315/80R22.5	20	L	TL	156/150	20.8	16.5	75	L	42.8	1087	12.4	314	9.00	8820	123	4000	850	7390	123	3350	850
				154/150																	
385/65R22.5	20	L	TL	160	20.8	16.5	68	K	42.0	1067	15.2	385	11.75	9920	125	4500	860	-	-	-	-
				158																	



ENERGY AEL8



- Recommend to use
- Permitted
- Not recommended to use

The unique pattern design is beautiful and generous.

Four zigzag grooves design provides excellent handling performance, effectively prevents gravel entrapment, and enhancing the tire's own cleaning ability.

Wide driving surface, deep pattern grooves design and using the ultra-high wear-resistant formula, which give the product strong wear resistance.

Size	P.R.	Load Range	Style	Load Index	Tread Depth		Max Speed mph	Speed Rating	Overall Diameter		Overall Width		Standard Rim	Max. Tire Load Single				Max. Tire Load Dual			
					32nds	mm			in.	mm.	in.	mm.		lbs.	psi	kg.	kPa	lbs.	psi	kg.	kPa
12R22.5	18	J	TL	152/149	21.4	17.0	80	M	42.7	1084	11.8	300	9.00	7830	135	3550	930	7160	135	3250	930



ENERGY AEL9



- Recommend to use
- Permitted
- Not recommended to use

The biomimetic pattern design is beautiful and generous, energy-saving, environment-friendly.

Four straight grooves design, providing excellent handling and drainage performance.

The stone ejectors at the bottom of the tread grooves effectively prevent the clamping of stone and enhance the cleaning ability of the tire.

Size	P.R.	Load Range	Style	Load Index	Tread Depth		Max Speed mph	Speed Rating	Overall Diameter		Overall Width		Standard Rim	Max. Tire Load Single				Max. Tire Load Dual			
					32nds	mm			in.	mm.	in.	mm.		lbs.	psi	kg.	kPa	lbs.	psi	kg.	kPa
12R22.5	18	J	TL	152/149	20.8	16.5	75	L	42.7	1084	11.8	300	9.00	7830	135	3550	930	7160	135	3250	930



ENERGY AEL11



- Recommend to use
- Permitted
- Not recommended to use

Special three zigzag groove pattern design is more elegant in design.

The groove bottom design can effectively prevent the stones from stabbing the tire and improve the cleaning ability of the tire itself

The design of wide tread width and deep grooves combined with the tread adopts ultra-high wear-resistant formula, which endows the product with great wear resistance.

Size	P.R.	Load Range	Style	Load Index	Tread Depth		Max Speed mph	Speed Rating	Overall Diameter		Overall Width		Standard Rim	Max. Tire Load Single				Max. Tire Load Dual			
					32nds	mm			in.	mm.	in.	mm.		lbs.	psi	kg.	kPa	lbs.	psi	kg.	kPa
12R22.5	18	J	TL	152/149	21.4	17.0	80	M	42.7	1084	11.8	300	9.00	7830	135	3550	930	7160	135	3250	930



GALAXY AF177



- Recommend to use
- Permitted
- Not recommended to use

In principle circumferential and continual pattern design provides lower running resistance and noise.

Special tread design provides extra ordinary anti-side-skid and anti-wet performance.

Size	P.R.	Load Range	Style	Load Index	Tread Depth		Max Speed mph	Speed Rating	Overall Diameter		Overall Width		Standard Rim	Max. Tire Load Single				Max. Tire Load Dual			
					32nds	mm			in.	mm.	in.	mm.		lbs.	psi	kg.	kPa	lbs.	psi	kg.	kPa
8R22.5	14	G	TL	130/128	17.0	13.5	80	M	36.8	935	8.0	203	6.00	4190	120	1900	830	3970	120	1800	830
9R22.5	16	H	TL	139/137	18.3	14.5	80	M	38.3	974	9.0	229	6.75	5360	135	2430	930	5070	135	2300	930
10R22.5	16	H	TL	144/142	18.9	15.5	80	M	40.1	1018	10.0	254	7.50	6175	130	2800	900	5840	130	2650	900
11R22.5	16	H	TL	146/143	20.8	16.5	80	M	41.5	1054	11.0	279	8.25	6610	120	3000	830	6005	120	2725	830
11R24.5	16	H	TL	149/146	20.8	16.5	75	L	43.4	1103	11.0	279	8.25	7160	120	3250	830	6620	120	3000	830
12R22.5	18	J	TL	152/149	21.4	17.0	80	M	42.7	1084	11.8	300	9.00	7830	135	3550	930	7160	135	3250	930
205/75R17.5	14	G	TL	124/122	15.7	12.5	80	M	29.5	749	8.0	204	6.00	3530	110	1600	760	3310	110	1500	760
215/75R17.5	16	H	TL	135/133	15.7	12.5	62	J	30.0	761	8.3	211	6.00	4805	125	2180	860	4540	125	2060	860
225/75R17.5	16	H	TL	129/127	15.7	12.5	80	M	30.6	776	8.8	226	6.75	4080	120	1850	830	3860	120	1750	830
235/75R17.5	18	J	TL	143/141	16.4	13.0	62	J	31.2	792	9.1	233	6.75	6005	127	2725	875	5675	127	2575	875
245/70R17.5	16	H	TL	136/134	15.7	12.5	80	M	30.7	781	9.7	248	7.50	4940	130	2240	850	4675	130	2120	850
245/70R17.5	18	J	TL	143/141	15.7	12.5	62	J	30.7	781	9.7	248	7.50	6005	130	2725	900	5675	130	2575	900
225/70R19.5	14	G	TL	128/126	16.4	13.0	80	M	31.7	804	8.8	226	6.75	3970	110	1800	760	3750	110	1700	760
245/70R19.5	16	H	TL	136/134	15.7	12.5	80	M	32.8	832	9.7	248	7.50	4940	120	2240	830	4675	120	2120	830
245/70R19.5	18	J	TL	143/141	15.7	12.5	62	J	32.8	832	9.7	248	7.50	6005	127	2725	875	5675	127	2575	875
255/70R22.5	16	H	TL	140/137	16.4	13.0	80	M	36.6	930	10.0	255	7.50	5510	120	2500	830	5070	120	2300	830
265/70R19.5	16	H	TL	140/138	17.6	14.0	80	M	34.1	866	10.3	262	7.50	5510	120	2500	830	5205	120	2360	830
265/70R19.5	18	J	TL	143/141	17.6	14.0	62	J	34.1	866	10.3	262	7.50	6005	123	2725	850	5675	123	2575	850
285/70R19.5	16	H	TL	146/144	17.6	14.0	80	M	35.0	888	11.1	283	8.25	6610	130	3000	900	6175	130	2800	900
285/70R19.5	18	J	TL	150/148	18.3	14.5	62	J	35.0	888	11.1	283	8.25	7385	130	3350	900	6945	130	3150	900
275/70R22.5	18	H	TL	148/145	21.0	16.5	80	M	40.0	958	11.0	276	8.25	6940	130	3150	900	6395	130	2900	900
275/80R22.5	16	H	TL	149/146	20.8	16.5	80	M	39.8	1012	10.9	276	8.25	7165	123	3250	850	6620	123	3000	850
295/80R22.5	18	J	TL	154/151	20.8	16.5	80	M	41.1	1044	11.7	298	9.00	8270	130	3750	900	7610	130	3450	900
315/70R22.5	18	J	TL	156/150	19.5	15.5	80	L	42.3	1075	12.4	314	9.00	8820	130	4000	900	7385	130	3350	900
315/80R22.5	20	L	TL	157/154	20.8	16.5	80	M	42.3	1075	12.4	314	9.00	9090	130	4125	900	8270	130	3750	900



GALAXY AF156



- Recommend to use
- Permitted
- Not recommended to use

Buttressed shoulder helps resist wear in high scrub applications.
Full-depth sipes offer exceptional traction throughout the usable life of the tyre.

Size	P.R.	Load Range	Style	Load Index	Tread Depth		Max Speed mph	Speed Rating	Overall Diameter		Overall Width		Standard Rim	Max. Tire Load Single				Max. Tire Load Dual			
					32nds	mm			in.	mm.	in.	mm.		lbs.	psi	kg.	kPa	lbs.	psi	kg.	kPa
11.00R20	18	J	TT	152/149	18.6	14.8	68	K	42.8	1087	11.3	287	8.0	7830	135	3550	930	7170	135	3250	930



GALAXY AF558



- Recommend to use
- Permitted
- Not recommended to use

Special tread pattern design provides long mileage, low noise and excellent performance of excellent performance to avoid abnormal wear.
Circumferential pattern design helps to reduce rolling resistance and improve high-speed performance.

Size	P.R.	Load Range	Style	Load Index	Tread Depth		Max Speed mph	Speed Rating	Overall Diameter		Overall Width		Standard Rim	Max. Tire Load Single				Max. Tire Load Dual			
					32nds	mm			in.	mm.	in.	mm.		lbs.	psi	kg.	kPa	lbs.	psi	kg.	kPa
285/75R24.5	16	H	TL	147/144	18.9	15.0	75	L	41.3	1050	11.1	283	8.25	6780	120	3075	830	6175	120	2800	830
295/75R22.5	16	H	TL	146/143	18.9	15.0	75	L	39.8	1010	11.7	298	9.00	6610	120	3000	830	6005	120	2725	830



GALAXY AF867



- Recommend to use
- Permitted
- Not recommended to use

Wider and circumferential grooves design with extra sideslip resistance.
Low running noise and running resistance.

Size	P.R.	Load Range	Style	Load Index	Tread Depth		Max Speed mph	Speed Rating	Overall Diameter		Overall Width		Standard Rim	Max. Tire Load Single				Max. Tire Load Dual			
					32nds	mm			in.	mm.	in.	mm.		lbs.	psi	kg.	kPa	lbs.	psi	kg.	kPa
11.00R22	18	J	TT	154/151	18.9	15.0	75	L	44.7	1135	11.5	293	8.00	8265	135	3750	930	7605	135	3450	930
315/80R22.5	18	J	TL	154/151	18.9	15.0	80	M	42.3	1075	12.4	314	9.00	8270	120	3750	830	7610	120	3450	830



GALAXY AF667



- Recommend to use
- Permitted
- Not recommended to use

Strong tire shoulders and center of tread design improve mileage and steering stability.
Good sideslip and mud slip resistance.
Even wear tread pattern design.

Size	P.R.	Load Range	Style	Load Index	Tread Depth		Max Speed mph	Speed Rating	Overall Diameter		Overall Width		Standard Rim	Max. Tire Load Single				Max. Tire Load Dual			
					32nds	mm			in.	mm.	in.	mm.		lbs.	psi	kg.	kPa	lbs.	psi	kg.	kPa
11.00R22	18	J	TT	154/151	18.9	15.0	75	L	44.7	1135	11.5	293	8.00	8270	135	3750	930	7610	135	3450	930
12R22.5	18	J	TL	152/149	18.9	15.0	80	M	42.7	1084	11.8	300	9.00	7830	135	3550	930	7160	135	3250	930
275/80R22.5	16	H	TL	149/146	18.9	15.0	80	M	39.8	1012	10.9	276	8.25	7160	123	3250	850	6620	123	3000	850
295/60R22.5	16	H	TL	150/147	17.0	13.5	75	L	36.5	926	11.5	292	9.00	7385	130	3350	900	6780	130	3075	900
295/80R22.5	18	J	TL	154/151	18.9	15.0	80	M	41.1	1044	11.7	298	9.00	8270	130	3750	900	7610	130	3450	900
305/70R22.5	16	H	TL	152/148	18.9	15.0	80	M	39.4	1000	12.0	305	9.00	7830	130	3550	900	6945	130	3150	900
305/75R24.5	16	H	TL	154/149	18.9	15.0	75	L	42.5	1080	12.0	305	9.00	8270	123	3750	850	7160	123	3250	850
315/60R22.5	16	H	TL	152/148	17.0	13.5	80	M	37.4	949	12.4	316	9.75	7830	130	3550	900	6945	130	3150	900
315/80R22.5	18	J	TL	154/151	18.9	15.0	80	M	42.3	1075	12.4	314	9.00	8270	120	3750	830	7610	120	3450	830
315/80R22.5	20	L	TL	157/154	18.9	15.0	80	M	42.3	1075	12.4	314	9.00	9090	130	4125	900	8270	130	3750	900



ENERGY ADL2



- Recommend to use
- Permitted
- Not recommended to use

Specific design of shoulder area for high resistance against kerbing and lateral scrubbing. Directional pattern that brings high traction performance while offering good regular wear. Full depth inclined sipes on central grooves along with full depth sipes and grooves on shoulder for enhanced transversal and longitudinal grip and traction throughout entire tyre life.

Size	P.R.	Load Range	Style	Load Index	Tread Depth		Max Speed mph	Speed Rating	Overall Diameter		Overall Width		Standard Rim	Max. Tire Load Single				Max. Tire Load Dual			
					32nds	mm			in.	mm.	in.	mm.		lbs.	psi	kg.	kPa	lbs.	psi	kg.	kPa
315/70R22.5	18	J	TL	154/150	23.3	18.5	75	L	40.0	1017	12.2	310	9.00	8270	130	3750	900	7390	130	3350	900
				152/148																	
315/80R22.5	20	L	TL	156/150	26.5	21.0	75	L	42.8	1087	12.4	314	9.00	8820	123	4000	850	7390	123	3350	850
				154/150																	



ENERGY ADL8



- Recommend to use
- Permitted
- Not recommended to use

The design of four longitudinal grooves combined with inclined transverse grooves provides powerful traction and wet grip, making it safer, more comfortable and more fuel-efficient. The new horizontal groove design provides excellent grip. Deepened tread pattern and high-speed driving wear-resistant formula ensure higher mileage in mixed road conditions such as high-speed and national highways.

Size	P.R.	Load Range	Style	Load Index	Tread Depth		Max Speed mph	Speed Rating	Overall Diameter		Overall Width		Standard Rim	Max. Tire Load Single				Max. Tire Load Dual			
					32nds	mm			in.	mm.	in.	mm.		lbs.	psi	kg.	kPa	lbs.	psi	kg.	kPa
12R22.5	18	J	TL	152/149	29.0	23.0	75	L	42.7	1084	11.8	300	9.00	7830	135	3550	930	7160	135	3250	930



ENERGY ADL9



- Recommend to use
- Permitted
- Not recommended to use

New unique directional pattern, beautiful and generous. Deep pattern fine groove design, providing good wet and grip performance. Shoulder reinforcement design, tread blocks are more solid, providing better driveability and braking

Size	P.R.	Load Range	Style	Load Index	Tread Depth		Max Speed mph	Speed Rating	Overall Diameter		Overall Width		Standard Rim	Max. Tire Load Single				Max. Tire Load Dual			
					32nds	mm			in.	mm.	in.	mm.		lbs.	psi	kg.	kPa	lbs.	psi	kg.	kPa
12R22.5	18	J	TL	152/149	25.2	20.0	75	K	42.7	1084	11.8	300	9.00	7830	135	3550	930	7160	135	3250	930



CONQUEROR AF557



- Recommend to use
- Permitted
- Not recommended to use

Medium to long-range drive tyre for highway and regional use. Excellent wet and dry manoeuvrability. Sidewall protector for superior durability.

Size	P.R.	Load Range	Style	Load Index	Tread Depth		Max Speed mph	Speed Rating	Overall Diameter		Overall Width		Standard Rim	Max. Tire Load Single				Max. Tire Load Dual			
					32nds	mm			in.	mm.	in.	mm.		lbs.	psi	kg.	kPa	lbs.	psi	kg.	kPa
10.00R20	18	J	TT	149/146	27.0	21.5	75	L	41.5	1055	10.9	278	7.50	7160	135	3250	930	6610	135	3000	930
11.00R22	18	J	TT	154/151	27.7	22.0	75	L	44.7	1135	11.5	293	8.00	8270	135	3750	930	7610	135	3450	930
12R22.5	18	J	TL	152/149	25.2	20.0	80	M	42.7	1084	11.8	300	9.00	7830	135	3550	930	7160	135	3250	930
295/60R22.5	16	H	TL	150/147	23.3	18.5	75	L	36.5	926	11.5	292	9.00	7385	130	3350	900	6780	130	3075	900
295/80R22.5	18	J	TL	154/151	25.2	20.0	80	M	41.1	1044	11.7	298	9.00	8270	130	3750	900	7610	130	3450	900
305/70R22.5	16	H	TL	152/148	27.7	22.0	80	M	39.4	1000	12.0	305	9.00	7830	130	3550	900	6945	130	3150	900
305/75R24.5	16	H	TL	154/149	27.7	22.0	75	L	42.5	1080	12.0	305	9.00	8270	123	3750	850	7160	123	3250	850
315/60R22.5	16	H	TL	152/148	23.3	18.5	80	M	37.4	949	12.4	316	9.75	7830	130	3550	900	6945	130	3150	900
315/80R22.5	18	J	TL	154/151	25.2	20.0	80	M	42.3	1075	12.4	314	9.00	8270	120	3750	830	7610	120	3450	830
315/80R22.5	20	L	TL	157/154	25.2	20.0	80	M	42.3	1075	12.4	314	9.00	9090	130	4125	900	8270	130	3750	900



CONQUEROR AF717



- Recommend to use
- Permitted
- Not recommended to use

Fuel efficient drive tyre.
 No compromise on durability, irregular wear resistance and wet performance.
 Excellent traction and wet weather handling.

Size	P.R.	Load Range	Style	Load Index	Tread Depth		Max Speed mph	Speed Rating	Overall Diameter		Overall Width		Standard Rim	Max. Tire Load Single				Max. Tire Load Dual			
					32nds	mm			in.	mm.	in.	mm.		lbs.	psi	kg.	kPa	lbs.	psi	kg.	kPa
11.00R22	18	J	TT	154/151	27.7	22.0	75	L	44.7	1135	11.5	293	8.00	8270	135	3750	930	7610	135	3450	930
11R22.5	16	H	TL	146/143	22.7	18.0	80	M	41.5	1054	11.0	279	8.25	6610	120	3000	830	6005	120	2725	830
205/75R17.5	14	G	TL	124/122	18.3	14.5	80	M	29.6	753	8.0	204	6.00	3530	110	1600	760	3310	110	1500	760
215/75R17.5	14	G	TL	126/124	18.3	14.5	80	M	30.1	765	8.3	211	6.00	3750	102	1700	700	3530	102	1600	700
225/75R17.5	16	H	TL	129/127	19.6	15.5	80	M	30.8	782	8.8	226	6.75	4080	120	1850	830	3860	120	1750	830
235/75R17.5	16	H	TL	132/130	19.6	15.5	80	M	31.4	797	9.1	233	6.75	4410	112	2000	775	4190	112	1900	775
245/70R17.5	16	H	TL	136/134	15.7	12.5	80	M	31.0	787	9.7	248	7.50	4940	123	2240	850	4675	123	2120	850
225/70R19.5	14	G	TL	128/126	18.3	14.5	80	M	31.8	807	8.8	226	6.75	3970	110	1800	760	3750	110	1700	760
245/70R19.5	16	H	TL	136/134	19.6	15.5	80	M	33.0	838	9.7	248	7.50	4940	120	2240	830	4675	120	2120	830
265/70R19.5	16	H	TL	140/138	19.6	15.5	80	M	34.2	869	10.3	262	7.50	5510	120	2500	830	5205	120	2360	830
285/70R19.5	16	H	TL	146/144	20.8	16.5	80	M	35.2	893	11.1	283	8.25	6610	130	3000	900	6175	130	2800	900
275/70R22.5	18	H	TL	148/145	23.5	18.5	80	M	40.0	958	11.0	276	8.25	6940	130	3150	900	6395	130	2900	900
275/80R22.5	16	H	TL	149/146	22.7	18.0	80	M	39.8	1012	10.9	276	8.25	7165	123	3250	850	6620	123	3000	850
315/70R22.5	18	J	TL	156/150	22.7	18.0	80	L	42.3	1075	12.4	314	9.00	8820	130	4000	900	7385	130	3350	900
315/80R22.5	18	J	TL	154/151	22.7	18.0	80	M	42.3	1075	12.4	314	9.00	8270	120	3750	830	7610	120	3450	830
315/80R22.5	20	L	TL	157/154	22.7	18.0	80	M	42.3	1075	12.4	314	9.00	9090	130	4125	900	8270	130	3750	900



GALAXY AF327



- Recommend to use
- Permitted
- Not recommended to use

Dual compound tread rubber helps ensure cool operating temperatures and helps keep tyre wear rate low.
 Deep, wide channels help provide excellent water evacuation throughout the life of the tyre.
 Lateral siping enhance traction and braking.

Size	P.R.	Load Range	Style	Load Index	Tread Depth		Max Speed mph	Speed Rating	Overall Diameter		Overall Width		Standard Rim	Max. Tire Load Single				Max. Tire Load Dual			
					32nds	mm			in.	mm.	in.	mm.		lbs.	psi	kg.	kPa	lbs.	psi	kg.	kPa
385/65R22.5	20	L	TL	160	20.8	16.5	68	K	42.2	1072	15.3	389	11.75	9920	130	4500	900	-	-	-	-
385/65R22.5	22	M	TL	162/160	20.8	16.5	68	K/L	42.2	1072	15.3	389	11.75	10500	140	4750	950	-	-	-	-



REGIONAL

Application

Medium distance and speed
 Relatively more start and brake



ENERGY AER3



- Recommend to use
- Permitted
- Not recommended to use

Wider tread design promotes high mileage, good handling and even wear
Stone ejector design avoids stones from penetrating to the belts.
Sipes on pattern helps to reduce heating and enhance anti-wet ability.

Size	P.R.	Load Range	Style	Load Index	Tread Depth		Max Speed mph	Speed Rating	Overall Diameter		Overall Width		Standard Rim	Max. Tire Load Single				Max. Tire Load Dual			
					32nds	mm			in.	mm.	in.	mm.		lbs.	psi	kg.	kPa	lbs.	psi	kg.	kPa
315/70R22.5	18	J	TL	156/150	18.9	15	75	L	40.0	1017	12.2	310	9.00	8820	130	4000	900	7390	130	3350	900
				154/150																	
315/80R22.5	20	L	TL	156/150	20.8	16.5	75	L	42.8	1087	12.4	314	9.00	8820	123	4000	850	7390	123	3350	850
				154/150																	



ENERGY AER5



- Recommend to use
- Permitted
- Not recommended to use

Three longitudinal patterns have good directivity and anti-sideslipping performance.
The optimization of the pattern angle can ensure the stability and driving performance of tires.
The design of ejectors at the bottom of the groove can efficiently prevent stones trapping and improve the self-cleaning ability of tires.

Size	P.R.	Load Range	Style	Load Index	Tread Depth		Max Speed mph	Speed Rating	Overall Diameter		Overall Width		Standard Rim	Max. Tire Load Single				Max. Tire Load Dual			
					32nds	mm			in.	mm.	in.	mm.		lbs.	psi	kg.	kPa	lbs.	psi	kg.	kPa
12.00R20	20	L	TT	156/153	20.8	16.5	68	K	44.2	1122	12.2	310	8.5	8820	130	4000	900	8050	130	3650	900



ENERGY AER2



- Recommend to use
- Permitted
- Not recommended to use

Newly designed tread pattern and tread compound provide an outstanding first life tyre mileage.
Unique groove rib and shoulder stone ejector prevent stone trapping and stone drilling.

Size	P.R.	Load Range	Style	Load Index	Tread Depth		Max Speed mph	Speed Rating	Overall Diameter		Overall Width		Standard Rim	Max. Tire Load Single				Max. Tire Load Dual			
					32nds	mm			in.	mm.	in.	mm.		lbs.	psi	kg.	kPa	lbs.	psi	kg.	kPa
11R22.5	16	H	TL	146/143	20.8	16.5	80	M	41.5	1054	11.0	279	8.25	6610	120	3000	830	6005	120	2725	830



ENERGY AER8



- Recommend to use
- Permitted
- Not recommended to use

Longitudinal straight groove and zigzag groove are designed together, taking into account braking and fuel-saving performance, effectively reducing braking distance and saving fuel costs.
Groove bottom protectors help prevent stone drilling than ensuring better durability.
The small pattern steel sheet design on tire shoulder can effectively improve the tire's skid resistance and make driving safer

Size	P.R.	Load Range	Style	Load Index	Tread Depth		Max Speed mph	Speed Rating	Overall Diameter		Overall Width		Standard Rim	Max. Tire Load Single				Max. Tire Load Dual			
					32nds	mm			in.	mm.	in.	mm.		lbs.	psi	kg.	kPa	lbs.	psi	kg.	kPa
12.00R24	20	L	TT	160/157	18.3	14.5	68	K	48.3	1226	12.3	313	8.5	9920	130	4500	900	9090	130	4125	900



GALAXY AF11



- Recommend to use
- Permitted
- Not recommended to use

Solid shoulder to help withstand scrub and abrasion.
Big tread block in middle to aid in cut resistance.
Excellent stability.

Size	P.R.	Load Range	Style	Load Index	Tread Depth		Max Speed mph	Speed Rating	Overall Diameter		Overall Width		Standard Rim	Max. Tire Load Single				Max. Tire Load Dual			
					32nds	mm			in.	mm.	in.	mm.		lbs.	psi	kg.	kPa	lbs.	psi	kg.	kPa
12.00R24	20	L	TT	160/157	18.3	14.5	68	K	48.3	1226	12.3	313	8.5	9920	130	4500	900	9090	130	4125	900



ENERGY ADR3



- Recommend to use
- Permitted
- Not recommended to use

Versatile multipurpose drive tyre for usage in a broad range of conditions.
Excellent mileage performance.
Superb traction level and high resistance against irregular wear.
Excellent durability and retreadability.

Size	P.R.	Load Range	Style	Load Index	Tread Depth		Max Speed mph	Speed Rating	Overall Diameter		Overall Width		Standard Rim	Max. Tire Load Single				Max. Tire Load Dual			
					32nds	mm			in.	mm.	in.	mm.		lbs.	psi	kg.	kPa	lbs.	psi	kg.	kPa
295/80R22.5	18	J	TL	154/151	26.5	21.0	75	L	41.1	1044	11.7	298	9.00	8270	130	3750	900	7610	130	3450	900
				152/148																	
315/70R22.5	18	J	TL	154/150	25.2	20.0	75	L	40.0	1017	12.2	310	9.00	8270	130	3750	900	7390	130	3350	900
				152/148																	
315/80R22.5	20	L	TL	156/150	26.5	21.0	75	L	42.8	1087	12.4	314	9.00	8820	123	4000	850	7390	123	3350	850
				154/150																	



GALAXY AF17



- Recommend to use
- Permitted
- Not recommended to use

Offset block shoulder design promotes soft soil mobility.
Discontinuous block design grooves offer excellent brake and traction ability.
Deep tread spicing designed for easy heat release, good traction performance and low noise level.

Size	P.R.	Load Range	Style	Load Index	Tread Depth		Max Speed mph	Speed Rating	Overall Diameter		Overall Width		Standard Rim	Max. Tire Load Single				Max. Tire Load Dual			
					32nds	mm			in.	mm.	in.	mm.		lbs.	psi	kg.	kPa	lbs.	psi	kg.	kPa
11.00R20	18	J	TT	152/149	18.3	14.5	75	L	42.8	1087	11.3	287	8.0	7830	135	3550	930	7170	135	3250	930



CONQUEROR AF81



- Recommend to use
- Permitted
- Not recommended to use

Tread block design featuring four longitudinal sipes for optimized grip and traction.
New damage resistant rubber compound for improved removal mileage.
Tread designed to minimize irregular wear.
Directional tread pattern to minimize stone retention.

Size	P.R.	Load Range	Style	Load Index	Tread Depth		Max Speed mph	Speed Rating	Overall Diameter		Overall Width		Standard Rim	Max. Tire Load Single				Max. Tire Load Dual			
					32nds	mm			in.	mm.	in.	mm.		lbs.	psi	kg.	kPa	lbs.	psi	kg.	kPa
10.00R20	18	J	TT	149/146	22.7	18.0	68	K	41.5	1053	10.7	273	7.5	7160	135	3250	930	6610	135	3000	930



CONQUEROR AF197



- Recommend to use
- Permitted
- Not recommended to use

All tread blocks get full contact with the ground, avoiding irregular wear and providing longer mileage.

Suitable for driving position, with high loading capability and good braking and ground grasping capability.

Size	P.R.	Load Range	Style	Load Index	Tread Depth		Max Speed mph	Speed Rating	Overall Diameter		Overall Width		Standard Rim	Max. Tire Load Single				Max. Tire Load Dual			
					32nds	mm			in.	mm.	in.	mm.		lbs.	psi	kg.	kPa	lbs.	psi	kg.	kPa
385/65R22.5	20	L	TL	160	20.8	16.5	68	K	42.2	1072	15.3	389	11.75	9920	130	4500	900	-	-	-	-



CONQUEROR ADR2



- Recommend to use
- Permitted
- Not recommended to use

Special bead structure design improves durability of the tyre.

Tread rubber with high anti-wear ability and deeper tread provide longer mileage.

Special tread pattern design effectively improves self-clean performance.

Strong pattern provides excellent traction ability.

Size	P.R.	Load Range	Style	Load Index	Tread Depth		Max Speed mph	Speed Rating	Overall Diameter		Overall Width		Standard Rim	Max. Tire Load Single				Max. Tire Load Dual			
					32nds	mm			in.	mm.	in.	mm.		lbs.	psi	kg.	kPa	lbs.	psi	kg.	kPa
11.00R20	18	J	TT	152/149	25.8	20.5	75	L	42.8	1087	11.3	287	8.0	7830	135	3550	930	7160	135	3250	930



CONQUEROR AF310



- Recommend to use
- Permitted
- Not recommended to use

Intended for mounting on all-position.

Advanced tread pattern with high load capacity.

Rubber compound is specially developed for all-weather tyre use.

Long mileage and increased resistance to uneven tread wear.

Size	P.R.	Load Range	Style	Load Index	Tread Depth		Max Speed mph	Speed Rating	Overall Diameter		Overall Width		Standard Rim	Max. Tire Load Single				Max. Tire Load Dual			
					32nds	mm			in.	mm.	in.	mm.		lbs.	psi	kg.	kPa	lbs.	psi	kg.	kPa
10.00R20	18	J	TT	149/146	19.5	15.5	75	L	41.2	1047	10.9	278	7.5	7160	135	3250	930	6610	135	3000	930



ENERGY ATR2



- Recommend to use
- Permitted
- Not recommended to use

Tread pattern designed to provide effective water drainage and uniform wear.

Outstanding longitudinal and lateral grip on dry and wet surfaces.

Wider shoulders giving an improved resistance to scrubbing.

Size	P.R.	Load Range	Style	Load Index	Tread Depth		Max Speed mph	Speed Rating	Overall Diameter		Overall Width		Standard Rim	Max. Tire Load Single				Max. Tire Load Dual			
					32nds	mm			in.	mm.	in.	mm.		lbs.	psi	kg.	kPa	lbs.	psi	kg.	kPa
385/65R22.5	20	L	TL	160	20.8	16.5	68	K	42.0	1067	15.2	385	11.75	9920	130	4500	900	-	-	-	-
				158																	
385/55R22.5	20	L	TL	160	19.5	15.5	62	J	39.2	996	15.2	386	12.25	9920	130	4500	900	-	-	-	-



ENERGY ATR3



- Recommend to use
- Permitted
- Not recommended to use

Rubber compound improves resistance to accidental damage.
 Widened tread gives better ground-contact and loading capacity.
 Ribbed sidewall protection and robust shoulder design improve resistance to lateral scrubbing.

Size	P.R.	Load Range	Style	Load Index	Tread Depth		Max Speed mph	Speed Rating	Overall Diameter		Overall Width		Standard Rim	Max. Tire Load Single				Max. Tire Load Dual			
					32nds	mm			in.	mm.	in.	mm.		lbs.	psi	kg.	kPa	lbs.	psi	kg.	kPa
385/65R22.5	20	L	TL	160	20.8	16.5	68	K	42.0	1067	15.2	385	11.75	9920	130	4500	900	-	-	-	-
				158																	



ENERGY ATR5



- Recommend to use
- Permitted
- Not recommended to use

Featuring 4 longitudinal, zig-zag grooves to provide excellent transverse grip and excellent braking performance, even on wet surfaces.
 Robust zig-zag grooves ensure excellent roadholding even on wet surfaces.
 Grooves geometry designed to prevent stone trapping.

Size	P.R.	Load Range	Style	Load Index	Tread Depth		Max Speed mph	Speed Rating	Overall Diameter		Overall Width		Standard Rim	Max. Tire Load Single				Max. Tire Load Dual			
					32nds	mm			in.	mm.	in.	mm.		lbs.	psi	kg.	kPa	lbs.	psi	kg.	kPa
385/55R19.5	18	J	TL	156	19.5	15.5	62	J	36.2	919	15.2	386	12.25	8820	130	4000	900	-	-	-	-
385/55R22.5	20	L	TL	160	19.5	15.5	62	J	39.2	996	15.2	386	12.25	9920	130	4500	900	-	-	-	-



GALAXY AF33



- Recommend to use
- Permitted
- Not recommended to use

Excellent high speed, durability performances and lower rolling resistance by solid shoulder and solid central pattern design.
 Discontinuous small block design and transverse groove offer excellent brake and traction ability.
 Designed for long mileage.

Size	P.R.	Load Range	Style	Load Index	Tread Depth		Max Speed mph	Speed Rating	Overall Diameter		Overall Width		Standard Rim	Max. Tire Load Single				Max. Tire Load Dual			
					32nds	mm			in.	mm.	in.	mm.		lbs.	psi	kg.	kPa	lbs.	psi	kg.	kPa
385/65R22.5	20	L	TL	160	20.8	16.5	68	K	42.2	1072	15.3	389	11.75	9920	130	4500	900	-	-	-	-
425/65R22.5	18	J	TL	162	20.8	16.5	62	J	44.3	1124	16.9	430	13.00	10475	110	4750	760	-	-	-	-
425/65R22.5	20	L	TL	165	20.8	16.5	68	K	44.3	1124	16.9	430	13.00	11350	120	5150	830	-	-	-	-



ENERGY ATR6



- Recommend to use
- Permitted
- Not recommended to use

Rib-type pattern helps deliver a smoother ride, while the wide base design allows you to haul more.
 Special tread compounds provide resistance to irregular wear, leading to long life and cutting your cost per mile.
 Sidewall protector Ribs protect the casing by fighting damage from curbing, cuts and abrasions.

Size	P.R.	Load Range	Style	Load Index	Tread Depth		Max Speed mph	Speed Rating	Overall Diameter		Overall Width		Standard Rim	Max. Tire Load Single				Max. Tire Load Dual			
					32nds	mm			in.	mm.	in.	mm.		lbs.	psi	kg.	kPa	lbs.	psi	kg.	kPa
425/65R22.5	20	L	TL	165	20.8	16.5	68	K	44.3	1124	16.6	422	12.25	11350	120	5150	830	-	-	-	-



MIX

Application

Shorter distance, highly carrying
harsh using conditions
Relatively more vehicles start and brake



ENERGY AEM



- Recommend to use
- Permitted
- Not recommended to use

Wider tread pattern design promotes high mileage, good handling and even wear
Special shoulder design with groove can effectively help heat dissipation and avoid irregular wear
Sipes on the pattern provide better ground grasping and anti-slipping performance
Protective ridges in the base of the grooves improve self-cleaning properties

Size	P.R.	Load Range	Style	Load Index	Tread Depth		Max Speed mph	Speed Rating	Overall Diameter		Overall Width		Standard Rim	Max. Tire Load Single				Max. Tire Load Dual			
					32nds	mm			in.	mm.	in.	mm.		lbs.	psi	kg.	kPa	lbs.	psi	kg.	kPa
385/65R22.5	20	L	TL	160 158	20.8	16.5	68	K L	42.0	1067	15.2	385	11.75	9920	130	4500	900	—	—	—	—



ENERGY AEM2



- Recommend to use
- Permitted
- Not recommended to use

Compact central tread blocks to improve resistance to tread tearing
Protective ridges in the base of the grooves improve self-cleaning properties
Wider tread grooves for improved grip on wet road surfaces
Reinforced shoulder area improves resistance to lateral impact damage

Size	P.R.	Load Range	Style	Load Index	Tread Depth		Max Speed mph	Speed Rating	Overall Diameter		Overall Width		Standard Rim	Max. Tire Load Single				Max. Tire Load Dual			
					32nds	mm			in.	mm.	in.	mm.		lbs.	psi	kg.	kPa	lbs.	psi	kg.	kPa
315/80R22.5	20	L	TL	157/154	20.8	16.5	68	K	42.8	1087	12.4	314	9.00	9090	130	4125	900	8270	130	3750	900



ENERGY AEM3



- Recommend to use
- Permitted
- Not recommended to use

More efficient water and mud dispersion
 Protective ridges in the base of the grooves improve self-cleaning properties
 Sipes on pattern and special groove design helps to reduce heating and to longer mileage
 The closed tyre shoulder design provides better ground grasping and anti-slipping ability

Size	P.R.	Load Range	Style	Load Index	Tread Depth		Max Speed mph	Speed Rating	Overall Diameter		Overall Width		Standard Rim	Max. Tire Load Single				Max. Tire Load Dual			
					32nds	mm			in.	mm.	in.	mm.		lbs.	psi	kg.	kPa	lbs.	psi	kg.	kPa
13R22.5	18	J	TL	156/150	22	17.5	68	K	44.3	1124	12.6	320	9.75	8820	125	4000	860	7390	125	3350	860



GALAXY AF18



- Recommend to use
- Permitted
- Not recommended to use

Offset block shoulder design promotes soft soil mobility.
 Application specific compound to help resist aggression from chipping and cutting.
 Zig-zag groove angles help resist stone retention and drilling.

Size	P.R.	Load Range	Style	Load Index	Tread Depth		Max Speed mph	Speed Rating	Overall Diameter		Overall Width		Standard Rim	Max. Tire Load Single				Max. Tire Load Dual			
					32nds	mm			in.	mm.	in.	mm.		lbs.	psi	kg.	kPa	lbs.	psi	kg.	kPa
6.50R16LT	12	F	TT	110/105	12.6	10.0	80	M	29.5	750	7.3	185	5.50F	2340	95	1060	670	2040	95	925	670
7.00R16LT	14	G	TT	118/114	16.4	13.0	75	L	30.6	776	7.9	200	5.50F	2910	110	1320	770	2600	110	1180	770
7.50R16LT	16	H	TT	124/120	15.7	12.5	75	L	31.7	805	8.5	215	6.00G	3525	125	1600	870	3085	125	1400	870
7.50R20	14	G	TT	130/126	15.7	12.5	75	L	36.8	935	8.5	215	6.0	4160	110	1885	770	3750	110	1700	770
8.25R16LT	16	H	TT	128/124	15.7	12.5	80	M	33.7	856	9.3	235	6.50H	3970	110	1800	770	3525	110	1600	770
8.25R20	16	H	TT	139/137	18.3	14.5	75	L	38.2	971	9.1	232	6.5	5360	135	2430	930	5070	135	2300	930
9.00R20	16	H	TT	144/142	19.5	15.5	75	L	40.2	1022	10.2	258	7.0	6175	130	2800	900	5850	130	2650	900
10.00R20	18	J	TT	149/146	20.8	16.5	75	L	41.5	1053	10.7	273	7.5	7160	135	3250	930	6610	135	3000	930
11.00R20	18	J	TT	152/149	21.4	17.0	75	L	42.8	1087	11.3	287	8.0	7830	135	3550	930	7160	135	3250	930
12.00R20	20	L	TT	156/153	22.0	17.5	75	L	44.2	1122	12.2	310	8.5	8820	130	4000	900	8050	130	3650	900
12.00R24	20	L	TT	160/157	18.3	14.5	68	K	48.3	1226	12.3	313	8.5	9920	130	4500	900	9090	130	4125	900
11R22.5	16	H	TL	146/143	19.5	15.5	80	M	41.5	1054	11.0	279	8.25	6610	120	3000	830	6005	120	2725	830
12R22.5	18	J	TL	152/149	21.4	17.0	80	M	42.7	1084	11.8	300	9.00	7830	135	3550	930	7160	135	3250	930
13R22.5	18	J	TL	154/151	22.0	17.5	75	L	44.3	1124	12.6	320	9.75	8270	120	3750	830	7610	120	3450	830
315/80R22.5	20	L	TL	157/154	21.4	17.0	80	M	42.3	1075	12.4	314	9.00	9090	130	4125	900	8270	130	3750	900



ENERGY ADM2



- Recommend to use
- Permitted
- Not recommended to use

Chamfered tread block design to reduce tread tearing
 Angled grooves reduce tread tearing when driving over obstacles
 Compact central tread blocks to improve resistance to tread tearing

Size	P.R.	Load Range	Style	Load Index	Tread Depth		Max Speed mph	Speed Rating	Overall Diameter		Overall Width		Standard Rim	Max. Tire Load Single				Max. Tire Load Dual			
					32nds	mm			in.	mm.	in.	mm.		lbs.	psi	kg.	kPa	lbs.	psi	kg.	kPa
315/80R22.5	20	L	TL	157/154	27.7	22	68	K	42.8	1087	12.4	314	9.00	9090	130	4125	900	8270	130	3750	900
13R22.5	18	J	TL	156/150	27.7	22	68	K	44.3	1124	12.6	320	9.75	8820	125	4000	860	7390	125	3350	860



ENERGY ADM7



- Recommend to use
- Permitted
- Not recommended to use

Unique block drive position pattern design, providing outstanding driving force and traction.
 The easy stone ejection design at the bottom of the pattern groove can effectively prevent the stones from stabbing the bottom of the groove and improve the cleaning ability of the tire itself
 The open shoulder design and the high heat dissipation efficiency of the grooves enhance the driving force of the tire.

Size	P.R.	Load Range	Style	Load Index	Tread Depth		Max Speed mph	Speed Rating	Overall Diameter		Overall Width		Standard Rim	Max. Tire Load Single				Max. Tire Load Dual			
					32nds	mm			in.	mm.	in.	mm.		lbs.	psi	kg.	kPa	lbs.	psi	kg.	kPa
12.00R20	20	L	TT	156/153	23.9	19.0	68	K	44.2	1122	12.2	310	8.5	8820	130	4000	900	8050	130	3650	900



ENERGY ADM8



- Recommend to use
- Permitted
- Not recommended to use

Lateral big block pattern design provides strong driving force and grip.

The stone ejector design at the bottom of the grooves protects from being punctured and effectively improves the service life of the tire.

The shoulder rib design prevents twist of shoulder during driving, improves tire life.

Puncture-resistant formula for strong applicability to different road conditions.

Size	P.R.	Load Range	Style	Load Index	Tread Depth		Max Speed mph	Speed Rating	Overall Diameter		Overall Width		Standard Rim	Max. Tire Load Single				Max. Tire Load Dual			
					32nds	mm			in.	mm.	in.	mm.		lbs.	psi	kg.	kPa	lbs.	psi	kg.	kPa
12.00R24	20	L	TT	160/157	22.7	18.0	68	K	48.3	1226	12.3	313	8.5	9920	130	4500	900	9090	130	4125	900

CONQUEROR AF559



- Recommend to use
- Permitted
- Not recommended to use

Alternating groove and tread block design can smoothly run over with less noise and running resistance.

Cut and chip resistant compound.

Reinforced belt package for added retreadability.

Size	P.R.	Load Range	Style	Load Index	Tread Depth		Max Speed mph	Speed Rating	Overall Diameter		Overall Width		Standard Rim	Max. Tire Load Single				Max. Tire Load Dual			
					32nds	mm			in.	mm.	in.	mm.		lbs.	psi	kg.	kPa	lbs.	psi	kg.	kPa
11R22.5	16	H	TL	146/143	28.3	22.5	80	M	41.5	1054	11.0	279	8.25	6610	120	3000	830	6005	120	2725	830
11R24.5	16	H	TL	149/146	28.3	22.5	75	L	43.4	1103	11.0	279	8.25	7160	120	3250	830	6610	120	3000	830
285/75R24.5	16	H	TL	147/144	28.3	22.5	75	L	41.3	1050	11.1	283	8.25	6780	120	3075	830	6175	120	2800	830
295/75R22.5	16	H	TL	146/143	28.3	22.5	75	L	39.8	1010	11.7	298	9.00	6610	120	3000	830	6005	120	2725	830

CONQUEROR AF91



- Recommend to use
- Permitted
- Not recommended to use

Deep grooves and solid central pattern design, furthest improve tyre life.

Special tread rubber compound helps resist chipping, chunking and tearing.

The drive axle radial designed for mixed road service of gravel-pit, earth and short distance on bitumen road.

Size	P.R.	Load Range	Style	Load Index	Tread Depth		Max Speed mph	Speed Rating	Overall Diameter		Overall Width		Standard Rim	Max. Tire Load Single				Max. Tire Load Dual			
					32nds	mm			in.	mm.	in.	mm.		lbs.	psi	kg.	kPa	lbs.	psi	kg.	kPa
8.25R16LT	16	H	TT	128/124	16.4	13.0	80	M	33.7	856	9.3	235	6.50H	3970	112	1800	770	3530	112	1600	770
12.00R20	18	J	TT	154/151	23.3	18.5	75	L	44.2	1122	12.2	310	8.5	8270	120	3750	830	7610	120	3450	830
12.00R20	20	L	TT	156/153	23.3	18.5	75	L	44.2	1122	12.2	310	8.5	8820	130	4000	900	8050	130	3650	900

CONQUEROR AF85



- Recommend to use
- Permitted
- Not recommended to use

Good driving capability on rough road conditions offered by ordinary block design.

Suitable for rough road condition in a medium-short distance application.

Size	P.R.	Load Range	Style	Load Index	Tread Depth		Max Speed mph	Speed Rating	Overall Diameter		Overall Width		Standard Rim	Max. Tire Load Single				Max. Tire Load Dual			
					32nds	mm			in.	mm.	in.	mm.		lbs.	psi	kg.	kPa	lbs.	psi	kg.	kPa
12.00R20	18	J	TT	154/151	25.8	20.5	68	K	44.4	1128	12.2	310	8.5	8270	120	3750	830	7610	120	3450	830
12.00R20	20	L	TT	156/153	25.8	20.5	62	J	44.4	1128	12.2	310	8.5	8820	130	4000	900	8050	130	3650	900



CONQUEROR AF88



- Recommend to use
- Permitted
- Not recommended to use

Improved traction due to new directional tread design.
Excellent protection from shocks, snags and impacts due to extra-thick sidewall.

Size	P.R.	Load Range	Style	Load Index	Tread Depth		Max Speed mph	Speed Rating	Overall Diameter		Overall Width		Standard Rim	Max. Tire Load Single				Max. Tire Load Dual			
					32nds	mm			in.	mm.	in.	mm.		lbs.	psi	kg.	kPa	lbs.	psi	kg.	kPa
12R22.5	18	J	TL	152/149	25.2	20.0	68	K	42.7	1084	11.8	300	9.00	7830	135	3550	930	7160	135	3250	930
13R22.5	18	J	TL	154/151	26.5	21.0	68	K	44.3	1124	12.6	320	9.75	8270	120	3750	830	7610	120	3450	830
295/80R22.5	18	J	TL	154/151	23.9	19.0	68	K	41.1	1044	11.7	298	9.00	8270	130	3750	900	7610	130	3450	900
315/80R22.5	20	L	TL	157/154	25.2	20.0	68	K	42.4	1078	12.4	314	9.00	9090	130	4125	900	8270	130	3750	900



CONQUEROR AF186



- Recommend to use
- Permitted
- Not recommended to use

Mixed block deeper patterns, widening road surface design to increase tyre grip.
Use of cut-resistant, anti-stab bar, wear of the tread formulation, an increase of tire wear resistance.
Applicable to various non-paved roads.

Size	P.R.	Load Range	Style	Load Index	Tread Depth		Max Speed mph	Speed Rating	Overall Diameter		Overall Width		Standard Rim	Max. Tire Load Single				Max. Tire Load Dual			
					32nds	mm			in.	mm.	in.	mm.		lbs.	psi	kg.	kPa	lbs.	psi	kg.	kPa
7.00R16LT	14	G	TT	118/114	18.9	15.0	68	K	30.7	781	7.9	200	5.50F	2910	110	1320	770	2600	110	1180	770
7.50R16LT	16	H	TT	124/120	18.9	15.0	68	K	31.9	810	8.5	215	6.00G	3525	125	1600	870	3085	125	1400	870
8.25R16LT	16	H	TT	128/124	19.5	15.5	68	K	33.9	862	9.3	235	6.50H	3970	112	1800	770	3530	112	1600	770
8.25R20	16	H	TT	139/137	20.8	16.5	68	K	38.4	975	9.1	232	6.5	5360	135	2430	930	5070	135	2300	930
9.00R20	16	H	TT	144/142	23.3	18.5	68	K	40.5	1028	10.2	258	7.0	6180	130	2800	900	5850	130	2650	900
10.00R20	18	J	TT	149/146	24.5	19.5	68	K	41.7	1059	10.7	273	7.5	7160	135	3250	930	6610	135	3000	930
11.00R20	18	J	TT	152/149	25.8	20.5	68	K	43.1	1094	11.3	287	8.0	7830	135	3550	930	7160	135	3250	930
12.00R20	18	J	TT	154/151	27.1	21.5	68	K	44.5	1130	12.2	310	8.5	8270	120	3750	830	7610	120	3450	830
12.00R20	20	L	TT	156/153	27.1	21.5	68	K	44.5	1130	12.2	310	8.5	8820	130	4000	900	8050	130	3650	900



CONQUEROR AF142



- Recommend to use
- Permitted
- Not recommended to use

One of the most popular tread patterns with all-steel casing.
Low rolling resistance helps to reduce fuel consumption.
Great traction characteristics on dry and wet roads.
Rubber compound is specially developed for all-weather tyre use.
High load capacity, high casing durability and resistance to damage.

Size	P.R.	Load Range	Style	Load Index	Tread Depth		Max Speed mph	Speed Rating	Overall Diameter		Overall Width		Standard Rim	Max. Tire Load Single				Max. Tire Load Dual			
					32nds	mm			in.	mm.	in.	mm.		lbs.	psi	kg.	kPa	lbs.	psi	kg.	kPa
9.00R20	16	H	TT	144/142	23.3	18.5	75	L	40.3	1024	10.2	260	7.0	6180	130	2800	900	5850	130	2650	900



CONQUEROR AF281



- Recommend to use
- Permitted
- Not recommended to use

All-season tube-type truck tyre with universal tread pattern on all-steel casing. Great traction characteristics on dry and wet roads. Rubber compound is specially developed for all-weather tyre use. High load capacity, high casing durability and resistance to damage.

Size	P.R.	Load Range	Style	Load Index	Tread Depth		Max Speed mph	Speed Rating	Overall Diameter		Overall Width		Standard Rim	Max. Tire Load Single				Max. Tire Load Dual			
					32nds	mm			in.	mm.	in.	mm.		lbs.	psi	kg.	kPa	lbs.	psi	kg.	kPa
10.00R20	18	J	TT	149/146	21.4	17.0	75	L	41.3	1050	10.9	278	7.5	7160	135	3250	930	6610	135	3000	930



CONQUEROR AF304



- Recommend to use
- Permitted
- Not recommended to use

Designed for exploitation in heavy duty conditions. New tread wear resistant components of rubber compound for tread and sidewall, intended for protection from cuts, provide long mileage. Rubber compound is specially developed for low temperature tyre use.

Size	P.R.	Load Range	Style	Load Index	Tread Depth		Max Speed mph	Speed Rating	Overall Diameter		Overall Width		Standard Rim	Max. Tire Load Single				Max. Tire Load Dual			
					32nds	mm			in.	mm.	in.	mm.		lbs.	psi	kg.	kPa	lbs.	psi	kg.	kPa
12.00R20	18	J	TT	154/151	23.9	19.0	75	L	44.2	1122	12.3	312	8.5	8270	123	3750	850	7610	123	3450	850



OFF ROAD

Application

Shorter distance, highly carrying capacity
extremely bad workig conditions



ENERGY AEH2



- Recommend to use
- Permitted
- Not recommended to use

New rubber compound offering improved resistance to accidental damage
 Outstanding durability and performance, even in harsh, off-road conditions
 Excellent resistance to chipping and cutting for long-lasting performance
 Special pattern design provides high self-cleaning performance

Size	P.R.	Load Range	Style	Load Index	Tread Depth		Max Speed mph	Speed Rating	Overall Diameter		Overall Width		Standard Rim	Max. Tire Load Single				Max. Tire Load Dual			
					32nds	mm			in.	mm.	in.	mm.		lbs.	psi	kg.	kPa	lbs.	psi	kg.	kPa
13R22.5	18	J	TL	156/150	30.2	24	56	G	44.3	1124	12.6	320	9.75	8820	125	4000	860	7390	125	3350	860



CONQUEROR AF73



- Recommend to use
- Permitted
- Not recommended to use

Larger and stronger tread block design.
 High traction and cut resistance.
 Extra stronger carcass and bead design for extra heavy load.

Size	P.R.	Load Range	Style	Load Index	Tread Depth		Max Speed mph	Speed Rating	Overall Diameter		Overall Width		Standard Rim	Max. Tire Load Single				Max. Tire Load Dual			
					32nds	mm			in.	mm.	in.	mm.		lbs.	psi	kg.	kPa	lbs.	psi	kg.	kPa
10.00R20	18	J	TT	149/146	32.8	26.0	41	D	42.1	1070	10.7	273	7.5	7160	135	3250	930	6610	135	3000	930
11.00R20	18	J	TT	152/149	32.8	26.0	41	D	43.5	1104	11.3	287	8.0	7830	135	3550	930	7160	135	3250	930
12.00R20	18	J	TT	154/151	32.8	26.0	41	D	44.8	1139	12.2	310	8.5	8270	120	3750	830	7610	120	3450	830
12.00R20	20	L	TT	156/153	32.8	26.0	41	D	44.8	1139	12.2	310	8.5	8820	130	4000	900	8050	130	3650	900



ENERGY AEH12



- Recommend to use
- Permitted
- Not recommended to use

Special tread pattern design, more beautiful and elegant, providing strong driving force and traction on the off road.

The design of widening the running surface and deepening the groove depth ensures a longer tire life.

The special design of stone row ribs on the tire shoulder can effectively prevent stones from being trapped and increase the tire life.

Size	P.R.	Load Range	Style	Load Index	Tread Depth		Max Speed mph	Speed Rating	Overall Diameter		Overall Width		Standard Rim	Max. Tire Load Single				Max. Tire Load Dual			
					32nds	mm			in.	mm.	in.	mm.		lbs.	psi	kg.	kPa	lbs.	psi	kg.	kPa
12.00R20	22	M	TT	158/155	32.8	26.0	41	D	44.2	1122	12.2	310	8.5	9370	140	4250	970	8540	140	3650	970



CONQUEROR AF97



- Recommend to use
- Permitted
- Not recommended to use

Optimized combination of high speed and anti-cut ability provided by coherent big block pattern design.

Deep and wide tread pattern provide excellent traction in all-terrain road conditions.

Size	P.R.	Load Range	Style	Load Index	Tread Depth		Max Speed mph	Speed Rating	Overall Diameter		Overall Width		Standard Rim	Max. Tire Load Single				Max. Tire Load Dual			
					32nds	mm			in.	mm.	in.	mm.		lbs.	psi	kg.	kPa	lbs.	psi	kg.	kPa
9.00R20	16	H	TT	144/142	25.2	20.0	62	J	40.2	1022	10.2	258	7.0	6180	130	2800	900	5850	130	2650	900
10.00R20	18	J	TT	149/146	25.8	20.5	62	J	41.5	1053	10.7	273	7.5	7160	135	3250	930	6610	135	3000	930
11.00R20	18	J	TT	152/149	26.5	21.0	62	J	42.8	1087	11.3	287	8.0	7830	135	3550	930	7160	135	3250	930
12.00R20	18	J	TT	154/151	27.1	21.5	62	J	44.2	1122	12.2	310	8.5	8270	120	3750	830	7610	120	3450	830
12.00R20	20	L	TT	156/153	27.1	21.5	62	J	44.2	1122	12.2	310	8.5	8820	130	4000	900	8050	130	3650	900
12.00R24	20	L	TT	160/157	29.0	21.0	68	K	48.6	1234	12.3	313	8.5	9920	130	4500	900	9090	130	4125	900
13R22.5	18	J	TL	156/150	27.7	22.0	68	K	44.3	1124	12.6	320	9.75	8820	125	4000	860	7390	125	3350	860



CONQUEROR AF169



- Recommend to use
- Permitted
- Not recommended to use



Wide tread enables long wear life with stability and durability.
 Deep tread for extra-long life and excellent traction.
 Cut resistance with good self-cleaning properties in harsh conditions.
 Suitable for all wheels position on mining vehicles.

Size	P.R.	Load Range	Style	Load Index	Tread Depth		Max Speed mph	Speed Rating	Overall Diameter		Overall Width		Standard Rim	Max. Tire Load Single				Max. Tire Load Dual			
					32nds	mm			in.	mm.	in.	mm.		lbs.	psi	kg.	kPa	lbs.	psi	kg.	kPa
8.25R16LT	16	H	TT	128/124	22.7	18.0	41	D	33.7	865	9.1	233	6.50H	3969	115	1800	770	3528	115	1600	770
8.25R20	16	H	TT	139/137	22.7	18.0	41	D	37.9	973	9.1	233	6.5	5358	135	2430	930	5072	135	2300	930
11.00R20	18	J	TT	152/149	29.0	23.0	41	D	42.9	1100	11.3	290	8.0	7828	135	3550	930	7166	135	3250	930
12.00R20	18	J	TT	154/151	30.2	24.0	41	D	44.3	1135	12.2	312	8.5	8269	120	3750	830	7607	120	3450	830



CONQUEROR AF189



- Recommend to use
- Permitted
- Not recommended to use



Wide and thick blocks, extra deep tread depth, offer excellent traction.
 Designed with strong structure, good load capacity.
 Long service life, good anti-wear and anti-puncture attributes.
 Suitable to mine and mountain roads.

Size	P.R.	Load Range	Style	Load Index	Tread Depth		Max Speed mph	Speed Rating	Overall Diameter		Overall Width		Standard Rim	Max. Tire Load Single				Max. Tire Load Dual			
					32nds	mm			in.	mm.	in.	mm.		lbs.	psi	kg.	kPa	lbs.	psi	kg.	kPa
8.25R16LT	16	H	TT	128/124	22.7	18.0	41	D	34.1	865	9.2	235	6.50H	3970	112	1800	770	3530	112	1600	770
10.00R20	18	J	TT	149/146	27.7	22.0	41	D	42.1	1070	10.7	273	7.5	7160	135	3250	930	6610	135	3000	930
11.00R20	18	J	TT	152/149	29.0	23.0	41	D	43.5	1104	11.3	287	8.0	7830	135	3550	930	7160	135	3250	930
12.00R20	18	J	TT	154/151	30.2	24.0	41	D	44.8	1139	12.2	310	8.5	8270	120	3750	830	7610	120	3450	830



CONQUEROR AF737



- Recommend to use
- Permitted
- Not recommended to use



Wide lug pattern with open shoulder design provides strong traction.
 Anti-skipping sidewall design provides strong anti-puncturing ability on bad road surface and improves durability of the tire body.
 Big blocks design can shoulder ground pressure more efficiently and keep good performance even on mixed road condition.
 Deeper tread pattern design ensure longer tyre lifetime.

Size	P.R.	Load Range	Style	Load Index	Tread Depth		Max Speed mph	Speed Rating	Overall Diameter		Overall Width		Standard Rim	Max. Tire Load Single				Max. Tire Load Dual			
					32nds	mm			in.	mm.	in.	mm.		lbs.	psi	kg.	kPa	lbs.	psi	kg.	kPa
14.00R20	★★	-	-	-	31.5	25.0	50	H	49.0	1245	14.8	375	10.0	11000	102	5000	700	-	-	-	-

PATTERN SIZE	AEL2	AEL8	AEL9	AEL11	AF177	AF156	AF867	AF558	AF867	ADL2	ADL8	ADL9	AF557	AF327	AF717	AER3	AER2	AER5
	P10	P10	P11	P11	P12	P13	P13	P14	P14	P15	P15	P16	P16	P17	P17	P19	P19	P20
6.50R16LT																		
7.00R16LT																		
7.50R16LT																		
7.50R20																		
8.25R16LT																		
8.25R20																		
9.00R20																		
10.00R20																		
11.00R20																		
11.00R22																		
12.00R20																		
12.00R24																		
8R22.5																		
9R22.5																		
10R22.5																		
11R22.5																		
11R24.5																		
12R22.5																		
13R22.5																		
205/75R17.5																		
215/75R17.5																		
225/70R19.5																		
225/75R17.5																		
235/75R17.5																		
245/70R17.5																		
245/70R19.5																		
255/70R22.5																		
265/70R19.5																		
275/70R22.5																		
275/80R22.5																		
285/70R19.5																		
285/75R24.5																		
295/60R22.5																		
295/75R22.5																		
295/80R22.5																		
305/70R22.5																		
305/75R24.5																		
315/60R22.5																		
315/70R22.5																		
315/80R22.5																		
385/55R19.5																		
385/55R22.5																		
385/65R22.5																		
425/65R22.5																		
14.00R20																		

PATTERN SIZE	AER8 P20	AF11 P21	AF17 P21	ADR3 P22	AF81 P22	AF197 P23	AF310 P23	ADR2 P24	ATR2 P24	ATR3 P25	AF33 P25	ATR5 P26	ATR6 P26	AEM P28	AEM2 P28	AEM3 P29	AF18 P29
6.50R16LT																	●
7.00R16LT																	●
7.50R16LT																	●
7.50R20																	●
8.25R16LT																	●
8.25R20																	●
9.00R20																	●
10.00R20					●		●										●
11.00R20			●					●									●
11.00R22																	
12.00R20																	●
12.00R24	●	●															●
8R22.5																	
9R22.5																	
10R22.5																	
11R22.5																	●
11R24.5																	
12R22.5																	●
13R22.5															●		●
205/75R17.5																	
215/75R17.5																	
225/70R19.5																	
225/75R17.5																	
235/75R17.5																	
245/70R17.5																	
245/70R19.5																	
255/70R22.5																	
265/70R19.5																	
275/70R22.5																	
275/80R22.5																	
285/70R19.5																	
285/75R24.5																	
295/60R22.5																	
295/75R22.5																	
295/80R22.5				●													
305/70R22.5																	
305/75R24.5																	
315/60R22.5																	
315/70R22.5				●													
315/80R22.5				●											●		●
385/55R19.5												●					
385/55R22.5								●				●					
385/65R22.5					●			●	●	●				●			
385/80R22.5																	
425/65R22.5										●		●					
14.00R20																	

PATTERN SIZE	ADM2 P30	ADM7 P30	ADM8 P31	AF91 P31	AF559 P32	AF85 P32	AF88 P33	AF142 P33	AF186 P34	AF281 P35	AF304 P35	AEH2 P37	AEH12 P37	AF73 P38	AF97 P38	AF169 P39	AF189 P39	AF737 P39	
6.50R16LT																			
7.00R16LT									●										
7.50R16LT									●										
7.50R20																			
8.25R16LT				●					●							●	●		
8.25R20									●							●			
9.00R20								●	●						●				
10.00R20									●	●				●	●				
11.00R20									●					●		●	●		
11.00R22																			
12.00R20		●		●		●			●		●		●	●	●	●	●		
12.00R24			●												●				
14.00R20																			●
9R22.5																			
10R22.5																			
11R22.5							●												
11R24.5							●												
12R22.5								●											
13R22.5	●							●				●		●					
205/75R17.5																			
215/75R17.5																			
225/70R19.5																			
225/75R17.5																			
235/75R17.5																			
245/70R17.5																			
245/70R19.5																			
255/70R22.5																			
265/70R19.5																			
275/70R22.5																			
275/80R22.5																			
285/70R24.5																			
285/75R24.5							●												
295/60R22.5																			
295/75R22.5							●												
295/80R22.5								●											
305/70R22.5																			
305/75R24.5																			
315/60R22.5																			
315/70R22.5																			
315/80R22.5	●									●									
385/55R19.5																			
385/55R22.5																			
385/65R22.5																			
425/65R22.5																			
14.00R20																			

RECOMMENDATIONS FOR THE SAFE USE OF AUFINE RADIAL TRUCK TYRES

Important instructions for safe inflation

Tyre pressure directly influences tyre life and safety

Over-inflation reduces:

- Comfort
- Grip
- Braking distance
- Tyre life span, particularly on drive axle tyres.
- Safety

Under-inflation leads to:

- Reduced vehicle handling and safety
- A reduction in casing retreadability
- An increase of rolling resistance consequently.



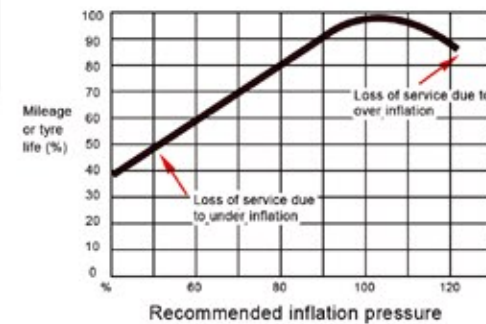
Over-inflation



Under-inflation



Effect of inflation pressure on tyre life



ADVICE BEFORE INFLATION

- 1 Weigh your vehicle and its load, axle by axle, to determine tyre pressure.
- 2 Measure the pressure when cold (when the vehicle has been stationary for several hours): pressures must be checked at regular intervals and during each service.
- 3 Important safety instruction: pressure increases when the vehicle is in motion, never reduce the pressure of a hot tyre.

METHOD OF INFLATION



- With inflation cage
- Place the tyre vertically in the inflation cage
 - Read the cage user manual.



Without inflation cage

Step 1

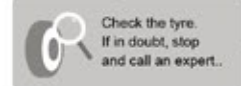


Pre-inflate tyre up to 1.5 bars. and STOP

Step 2



Inflate up to the appropriate pressure.



Check the tyre. If in doubt, stop and call an expert.



During inflating stand in line with the tyre tread three meters away.



Caution:

Driving with insufficient pressure can damage your tyres. After having driven with an underinflated tyre, do not re-inflate tyre: have your tyres fully checked over by an expert.



European Tyre Labelling

REGULATION (EC)NO 1222/2009

As of 1 November 2012, New tyre label regulations are in force to help promote safer, more economical and more environmentally friendly road transport in Europe. The new labels indicate tyre performance in three key areas: braking in wet conditions, exterior noise and rolling resistance.



FUEL EFFICIENCY

7 classes - from A (most efficient) to least efficient

The effect varies depending on the vehicle and driving conditions. However, the difference between a G and an A class for a complete set of tyres could reduce fuel consumption for trucks up to 20%.

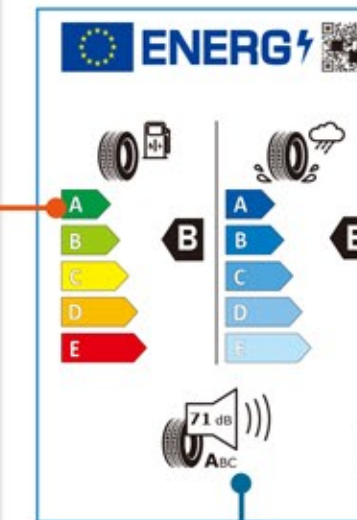
• Source: European Commission's impact Assessment SEC (2008) 2860.



WET GRIP

7 classes - from A (best wet grip) to worst wet grip

The effect may vary depending on the vehicle and driving conditions. However, in the case of full braking, the difference between a G and an A class for a complete set of tyres could be up to 30% shorter braking distances.



EXTERIOR NOISE

Exterior noise levels are split into 3 categories and measured in decibel (dB) in comparison with the new European tyre exterior noise levels to be introduced until 2016. The noise pictogram displays the categories while the black arrow next to the pictogram indicates the noise level as an absolute value.

Note that external tyre rolling noise is not related to interior vehicle noise



1 black sound wave (=3dB already less than the future European limit)



2 black sound waves (= already compliant with the future European limit)



3 black sound waves (= compliant with the current European limit)

OB LIGATION:

The Regulation requires that tyres produced after 30 June 2012 and on sale in the EU from November 2012 will show grade of Rolling Resistance, Wet Grip and Noise in all technical promotion materials.

• Some tyres are excluded, such as retread, professional off-road or studded tyres.